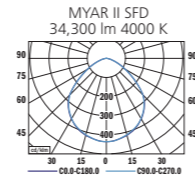


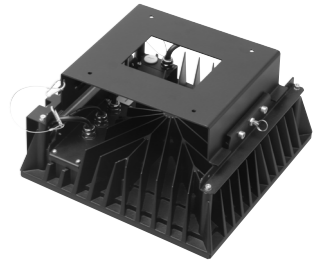
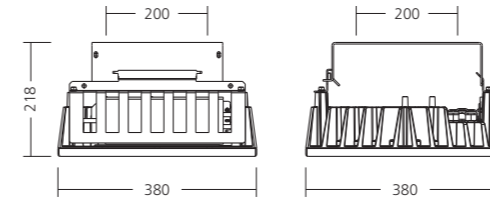
MYAR
PRISMA
LED



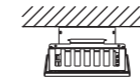
PHOTOMETRY



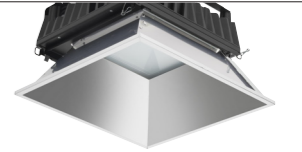
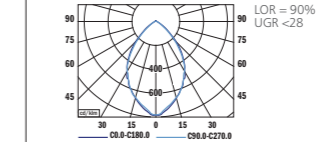
LOR = 100%
lower flux fraction 100%
upper flux fraction 0%
UGR <28



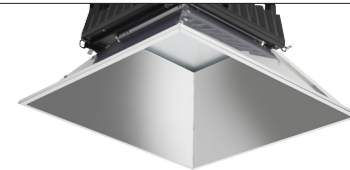
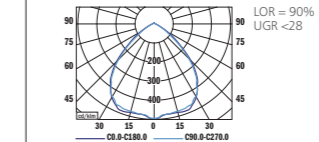
MOUNTING



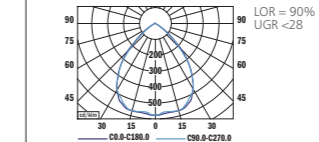
REFLECTOR 60° (BEAM ANGLE 68°)



REFLECTOR 80° (BEAM ANGLE 84°)



REFLECTOR 100° (BEAM ANGLE 93°)

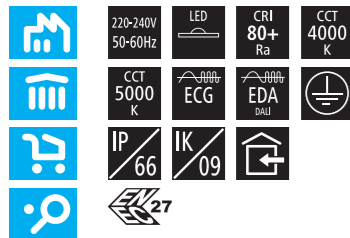


TYPE	NET LUMEN OUTPUT (at Ta = 25 °C) (lm)	POWER CONSUMPTION (W)	SYSTEM EFFICACY (lm/W)	COLOUR RENDERING INDEX CRI (Ra)	CORRELATED COLOUR TEMPERATURE CCT (K)	BEAM ANGLE (C0-180, C90-270)	WEIGHT (kg)	ORDER CODE	
								ECG	EDA
MYAR II SFD	15,300	105	146	80+	4000	98°	16.5	219015	219013
MYAR II SFD	15,650	105	149	80+	5000	98°	16.5	219016	219014
MYAR II SFD	22,300	157	142	80+	4000	98°	16.8	219019	219017
MYAR II SFD	22,850	157	146	80+	5000	98°	16.8	219020	219018
MYAR II SFD	33,300	273	122	80+	4000	98°	17.5	219023	219021
MYAR II SFD	34,100	273	125	80+	5000	98°	17.5	219024	219022

Luminous flux tolerance +/- 10%.

Reflector 60°	901006
Reflector 80°	901007
Reflector 100°	901008

Myar II Surfacel



EN

Mounting
Ceiling surfaced (SFD)

Optical system
Prismatic diffuser (PRD)

Wiring
Electronic control gear FIX/DALI (ECG/EDA)

Materials
Housing: die-cast aluminium + sheet steel
Diffuser: PMMA + glass

Surface finish
Housing: black RAL 9005 (B05)

Accessories
Reflector 60°/80°/100°
Protective foil available for food industry applications according to IFS (International Food Standard)

Service lifetime
100,000 hours/L90/B10 (ta 25°C) - 105/157W
100,000 hours/L80/B10 (ta 25°C) - 273W

Ambient temperature
From -40 °C to +45 °C (273W EDA)
From -40 °C to +50 °C (273W ECG)
From -40 °C to +55 °C (105W)
From -40 °C to +60 °C (157W)

DE

Montage
Deckenleuchte (SFD)

Optisches System
Prismatischer Diffusor (PRD)

Vorschaltgerät
Elektronisches Vorschaltgerät FIX/DALI (ECG/EDA)

Material
Körper: Aluminiumdruckguss + Stahlblech
Diffusor: PMMA + Glas

Oberflächenveredelung
Körper: schwarz RAL 9005 (B05)

Zubehör
Reflektor 60°/80°/100°
Schutzfolie gemäss IFS (International Food Standard) für Anwendungen in der Nahrungsmittelindustrie erhältlich

Lebensdauer
100,000 Stunden/L90/B10 (ta 25°C) - 105/157W
100,000 Stunden/L80/B10 (ta 25°C) - 273W

Umgebungstemperatur
Von -40 °C bis +45 °C (273W EDA)
Von -40 °C bis +50 °C (273W ECG)
Von -40 °C bis +55 °C (105W)
Von -40 °C bis +60 °C (157W)

FR

Montage
Plafonnier apparent (SFD)

Système optique
Diffuseur prismatique (PRD)

Équipement électrique
Ballast électronique FIX/DALI (ECG/EDA)

Matériels
Corps: aluminium moulé sous pression + tôle d'acier
Diffusor: PMMA + verre

Finition de surface
Corps: noir RAL 9005 (B05)

Accessoires
Réflecteur 60°/80°/100°
Feuille protectrice disponible pour l'industrie alimentaire selon la norme IFS (International Food Standard)

Durée de vie utile
100,000 heures/L90/B10 (ta 25°C) - 105/157W
100,000 heures/L80/B10 (ta 25°C) - 273W

Température ambiante
De -40 °C à +45 °C (273W EDA)
De -40 °C à +50 °C (273W ECG)
De -40 °C à +55 °C (105W)
De -40 °C à +60 °C (157W)

SK

Montáž
Prisadené (SFD)

Optický systém
Prizmatický difúzor (PRD)

Elektrická výbava
Elektronický predradník FIX/DALI (ECG/EDA)

Material
Teleso: hliníkový odliatok + oceľový plech
Difúzor: PMMA + sklo

Povrchová úprava
Teleso: čierna RAL 9005 (B05)

Príslušenstvo
Reflektor 60°/80°/100°
Ochranná fólia určená pre potravinový priemysel v súlade s IFS (International Food Standard)

Servisná životnosť
100,000 hodín/L90/B10 (ta 25°C) - 105/157W
100,000 hodín/L80/B10 (ta 25°C) - 273W

Teplota okolia
Od -40 °C do +45 °C (273W EDA)
Od -40 °C do +50 °C (273W ECG)
Od -40 °C do +55 °C (105W)
Od -40 °C do +60 °C (157W)

ES

Montaje
Sobrepuestas en el techo (SFD)

Sistema óptico
Difusor prismático (PRD)

Cableado
Equipo de control electrónico FIX/DALI (ECG/EDA)

Material
Cuerpo: aluminio moldeado + lámina de acero
Difusor: PMMA + cristal

Tratamiento de la superficie
Cuerpo: negro RAL 9005 (B05)

Accesorios
Refletores 60°/80°/100°
Lámina protectora disponible para aplicaciones alimentarias según IFS (Estándar Alimentario Internacional)

Vida útil
100,000 horas/L90/B10 (ta 25°C) - 105/157W
100,000 horas/L80/B10 (ta 25°C) - 273W

Temperatura ambiente
Desde -40 °C a +45 °C (273W EDA)
Desde -40 °C a +50 °C (273W ECG)
Desde -40 °C a +55 °C (105W)
Desde -40 °C a +60 °C (157W)

IT

Installazione
A plafone (SFD)

Sistema ottico
Diffusore prismatico (PRD)

Cablaggio
Ballast elettronico FIX/DALI (ECG/EDA)

Materiali
Corpo: pressofusione di alluminio + lamina d'acciaio
Diffusore: PMMA + vetro

Finitura
Corpo: nero RAL 9005 (B05)

Accessori
Riflettori 60°/80°/100°
Pellicola protettiva disponibile per applicazioni nell'industria alimentare secondo le IFS (International Food Standard)

Durata di vita
100,000 ore/L90/B10 (ta 25°C) - 105/157W
100,000 ore/L80/B10 (ta 25°C) - 273W

Temperatura d'ambiente
Da -40 °C a +45 °C (273W EDA)
Da -40 °C a +50 °C (273W ECG)
Da -40 °C a +55 °C (105W)
Da -40 °C a +60 °C (157W)

RU

Установка
Потолочная накладная (SFD)

Оптическая система
Призматического рассеиватель (PRD)

Электрическое оснащение
Электронный аппарат FIX/DALI (ECG/EDA)

Материал
Корпус: литой алюминий + листовая сталь
Рассеиватель: полиметилметакрилат + стекло

Отделка поверхности
Корпус: черный RAL 9005 (B05)

Аксессуары
Отражатель 60°/80°/100°
Защитная фольга для применения в пищевой промышленности в соответствии с Международным пищевым стандартом (IFS)

Срок службы
100,000 часов/L90/B10 (ta 25°C) - 105/157W
100,000 часов/L80/B10 (ta 25°C) - 273W

Температура окружающей среды
От -40 °C до +45 °C (273W EDA)
От -40 °C до +50 °C (273W ECG)
От -40 °C до +55 °C (105W)
От -40 °C до +60 °C (157W)



THE MANUFACTURER CONTINUES TO DEVELOP PRODUCTS THROUGHOUT THEIR LIFETIME. THEREFORE, THE COMPANY RESERVES THE RIGHT TO MODIFY MATERIALS, COMPONENTS, AND TECHNICAL PARAMETERS WITHOUT NOTICE. LUMINOUS OUTPUT AND ELECTRICAL LOAD HAVE AN INITIAL TOLERANCE OF +/- 10% FROM NOMINAL. FAILURE OF ONE LED LIGHT POINT WITHIN A LUMINAIRE DOES NOT IMPAIR FUNCTIONAL PERFORMANCE AND SO IS NOT CLASSIFIED AS REASON FOR COMPLAINT.

COMMERCIAL LED LUMINAIRES