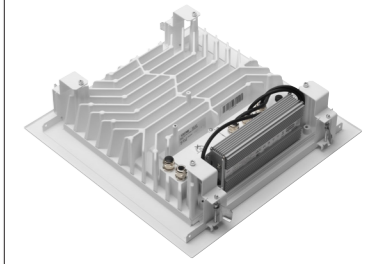
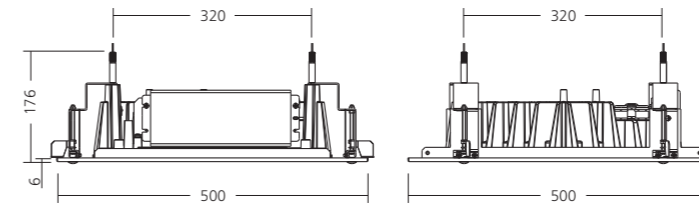
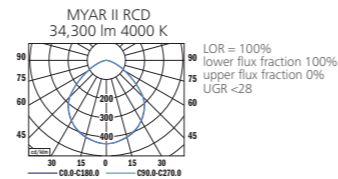


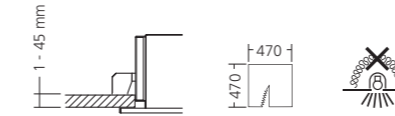
MYAR
PRISMA
LED



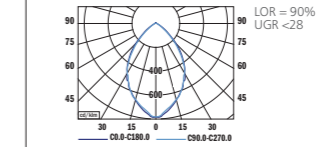
PHOTOMETRY



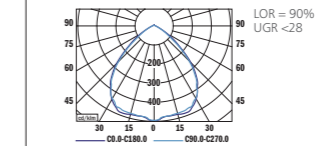
MOUNTING



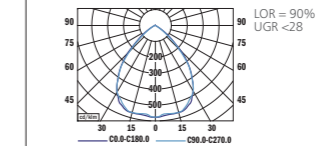
REFLECTOR 60° (BEAM ANGLE 68°)



REFLECTOR 80° (BEAM ANGLE 84°)



REFLECTOR 100° (BEAM ANGLE 93°)

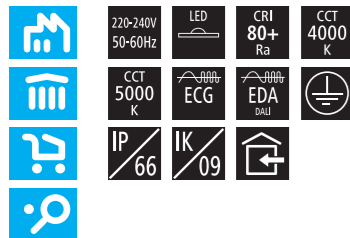


TYPE	NET LUMEN OUTPUT (at Ta = 25 °C) (lm)	POWER CONSUMPTION (W)	SYSTEM EFFICACY (lm/W)	COLOUR RENDERING INDEX CRI (Ra)	CORRELATED COLOUR TEMPERATURE CCT (K)	BEAM ANGLE (C0-180, C90-270)	WEIGHT (kg)	ORDER CODE	
								ECG	EDA
MYAR II RCD	15,300	105	146	80+	4000	98°	15.7	219027	219025
MYAR II RCD	15,650	105	149	80+	5000	98°	15.7	219028	219026
MYAR II RCD	22,300	157	142	80+	4000	98°	16.0	219031	219029
MYAR II RCD	22,850	157	146	80+	5000	98°	16.0	219032	219030
MYAR II RCD	33,300	273	122	80+	4000	98°	16.7	219035	219033
MYAR II RCD	34,100	273	125	80+	5000	98°	16.7	219036	219034

Luminous flux tolerance +/- 10%.

Reflector 60°	901006
Reflector 80°	901007
Reflector 100°	901008

Myar II Recessed



EN

Mounting
Ceiling recessed (RCB)

Optical system
Prismatic diffuser (PRD)

Wiring
Electronic control gear FIX/DALI (ECG/EDA)

Materials
Housing: die-cast aluminium + sheet steel
Diffuser: PMMA + glass
Mounting plate: sheet steel

Surface finish
White RAL 9003 (W03)

Accessories
Reflector 60°/80°/100°
Protective foil available for food industry applications according to IFS (International Food Standard)

Service lifetime
100,000 hours/L90/B10 (ta 25°C) - 105/157W
100,000 hours/L80/B50 (ta 25°C) - 273W

Ambient temperature
From -40 °C to +25 °C (273W)
From -40 °C to +45 °C (105W)
From -40 °C to +50 °C (157W)

DE

Montage
Einbauleuchte (RCB)

Optisches System
Prismatischer Diffusor (PRD)

Vorschaltgerät
Elektronisches Vorschaltgerät FIX/DALI (ECG/EDA)

Material
Körper: Aluminiumdruckguss + Stahlblech
Diffusor: PMMA + Glas
Montageplatte: Stahlblech

Oberflächenveredelung
Weiss RAL 9003 (W03)

Zubehör
Reflektor 60°/80°/100°
Schutzfolie gemäss IFS (International Food Standard) für Anwendungen in der Nahrungsmittelindustrie erhältlich

Lebensdauer
100,000 Stunden/L90/B10 (ta 25°C) - 105/157W
100,000 Stunden/L80/B50 (ta 25°C) - 273W

Umgebungstemperatur
Von -40 °C bis +25 °C (273W)
Von -40 °C bis +45 °C (105W)
Von -40 °C bis +50 °C (157W)

FR

Montage
Plafonnier encastrable (RCB)

Système optique
Diffuseur prisme (PRD)

Équipement électrique
Ballast électronique FIX/DALI (ECG/EDA)

Matériels
Corps: aluminium moulé sous pression + tôle d'acier
Diffusor: PMMA + verre
Plaque de montage: tôle d'acier

Finition de surface
Blanc RAL 9003 (W03)

Accessoires
Réflecteur 60°/80°/100°
Feuille protectrice disponible pour l'industrie alimentaire selon la norme IFS (International Food Standard)

Durée de vie utile
100,000 heures/L90/B10 (ta 25°C) - 105/157W
100,000 heures/L80/B50 (ta 25°C) - 273W

Température ambiante
De -40 °C à +25 °C (273W)
De -40 °C à +45 °C (105W)
De -40 °C à +50 °C (157W)

SK

Montáž
Vsadené (RCB)

Optický systém
Prizmatický difúzor (PRD)

Elektrická výbava
Elektronický predradník FIX/DALI (ECG/EDA)

Material
Teleso: hliníkový odliatok + oceľový plech
Difúzor: PMMA + sklo
Montážna platňa: oceľový plech

Povrchová úprava
Biela RAL 9003 (W03)

Príslušenstvo
Reflektory 60°/80°/100°
Ochranná fólia určená pre potravinový priemysel v súlade s IFS (International Food Standard)

Servisná životnosť
100,000 hodín/L90/B10 (ta 25°C) - 105/157W
100,000 hodín/L80/B50 (ta 25°C) - 273W

Teplota okolia
Od -40 °C do +25 °C (273W)
Od -40 °C do +45 °C (105W)
Od -40 °C do +50 °C (157W)

ES

Montaje
Empotradas en el techo (RCB)

Sistema óptico
Difusor prismático (PRD)

Cableado
Equipo de control electrónico FIX/DALI (ECG/EDA)

Material
Cuerpo: aluminio moldeado + lámina de acero
Difusor: PMMA + cristal
Placa de montaje: lámina de acero

Tratamiento de la superficie
Blanco RAL 9003 (W03)

Accesorios
Refletores 60°/80°/100°
Lámina protectora disponible para aplicaciones alimentarias según IFS (Estándar Alimentario Internacional)

Vida útil
100,000 horas/L90/B10 (ta 25°C) - 105/157W
100,000 horas/L80/B50 (ta 25°C) - 273W

Temperatura ambiente
Desde -40 °C a +25 °C (273W)
Desde -40 °C a +45 °C (105W)
Desde -40 °C a +50 °C (157W)

IT

Installazione
Ad incasso a soffitto (RCB)

Sistema ottico
Diffusore prismatico (PRD)

Cablaggio
Ballast elettronico FIX/DALI (ECG/EDA)

Materiali
Corpo: pressofusione di alluminio + lamina d'acciaio
Diffusore: PMMA + vetro
Plastra di installazione: lamina d'acciaio

Finitura
Bianco RAL 9003 (W03)

Accessori
Riflettori 60°/80°/100°
Pellicola protettiva disponibile per applicazioni nell'industria alimentare secondo le IFS (International Food Standard)

Durata di vita
100,000 ore/L90/B10 (ta 25°C) - 105/157W
100,000 ore/L80/B50 (ta 25°C) - 273W

Temperatura d'ambiente
Da -40 °C a +25 °C (273W)
Da -40 °C a +45 °C (105W)
Da -40 °C a +50 °C (157W)

RU

Установка
Потолочная встроенная (RCB)

Оптическая система
Призматического рассеиватель (PRD)

Электрическое оснащение
Электронный пускорегулирующий аппарат FIX/DALI (ECG/EDA)

Материал
Корпус: литой алюминий + листовая сталь
Рассеиватель: полиметилметакрилат + стекло
Монтажная пластина: листовая сталь

Отделка поверхности
Белый RAL 9003 (W03)

Аксессуары
Отражатель 60°/80°/100°
Защитная фольга для применения в пищевой промышленности в соответствии с Международным пищевым стандартом (IFS)

Срок службы
100,000 часов/L90/B10 (ta 25°C) - 105/157W
100,000 часов/L80/B50 (ta 25°C) - 273W

Температура окружающей среды
От -40 °C до +25 °C (273W)
От -40 °C до +45 °C (105W)
От -40 °C до +50 °C (157W)



THE MANUFACTURER CONTINUES TO DEVELOP PRODUCTS THROUGHOUT THEIR LIFETIME. THEREFORE, THE COMPANY RESERVES THE RIGHT TO MODIFY MATERIALS, COMPONENTS, AND TECHNICAL PARAMETERS WITHOUT NOTICE. LUMINOUS OUTPUT AND ELECTRICAL LOAD HAVE AN INITIAL TOLERANCE OF +/- 10% FROM NOMINAL. FAILURE OF ONE LED LIGHT POINT WITHIN A LUMINAIRE DOES NOT IMPAIR FUNCTIONAL PERFORMANCE AND SO IS NOT CLASSIFIED AS REASON FOR COMPLAINT.

COMMERCIAL LED LUMINAIRES