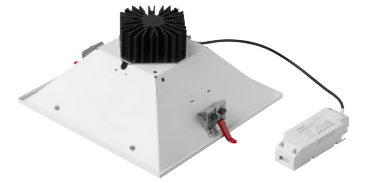
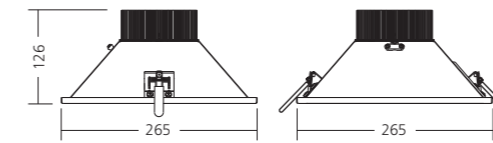
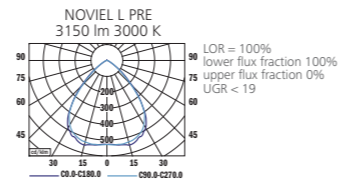


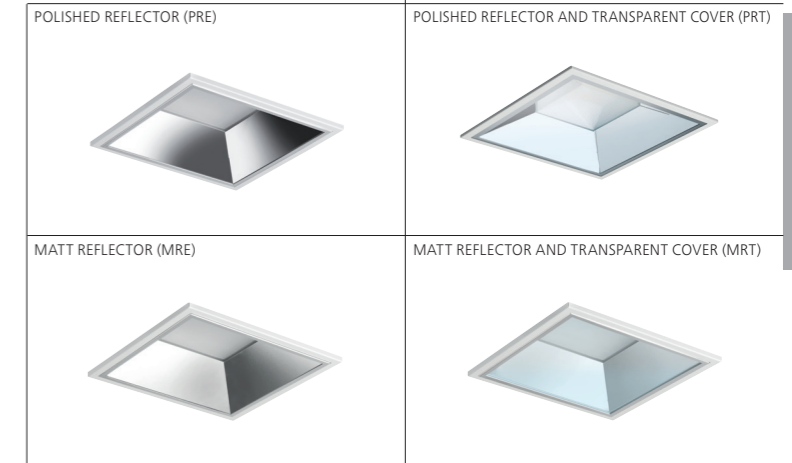
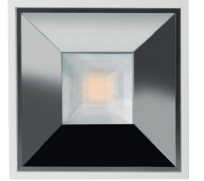
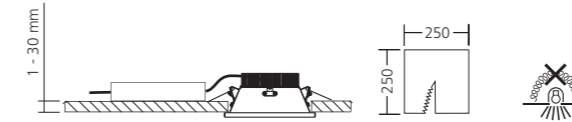
NOVIEL
POLISHED / MATT
LED



PHOTOMETRY



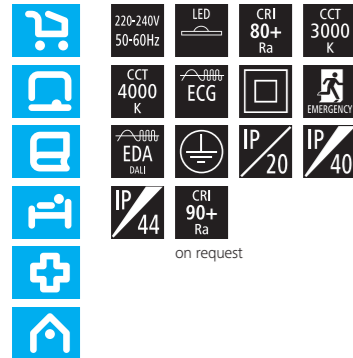
MOUNTING



Noviel II L

TYPE	NET LUMEN OUTPUT (at Ta = 25 °C) (lm)	POWER CONSUMPTION (W)	SYSTEM EFFICACY (lm/W)	COLOUR RENDERING INDEX CRI (Ra)	CORRELATED COLOUR TEMPERATURE CCT (K)	BEAM ANGLE (C0-180, C90-270)	EMERGENCY UNIT 3H (lm)	WEIGHT (kg)	ORDER CODE					
									REFLECTOR			REFLECTOR + COVER		
									ECG	EDA	EM	ECG	EDA	EM
NOVIEL II L PRE/PRT	3250	29	112	80+	3000	80°	300	1.6	124097	124099	124105	124121	124123	124129
NOVIEL II L PRE/PRT	3400	29	117	80+	4000	80°	300	1.6	124098	124100	124106	124122	124124	124130
NOVIEL II L PRE/PRT	3800	33	115	80+	3000	80°	300	1.6	124101	124103	124107	124125	124127	124131
NOVIEL II L PRE/PRT	4000	33	121	80+	4000	80°	300	1.6	124102	124104	124108	124126	124128	124132
NOVIEL II L MRE/MRT	3250	29	112	80+	3000	80°	300	1.6	124109	124111	124117	124133	124135	124141
NOVIEL II L MRE/MRT	3400	29	117	80+	4000	80°	300	1.6	124110	124112	124118	124134	124136	124142
NOVIEL II L MRE/MRT	3800	33	115	80+	3000	80°	300	1.6	124113	124115	124119	124137	124139	124143
NOVIEL II L MRE/MRT	4000	33	121	80+	4000	80°	300	1.6	124114	124116	124120	124138	124140	124144

Luminous flux tolerance +/- 10%.



EN

Mounting
Ceiling recessed
Optical system
Polished reflector (PRE)
Polished reflector + transparent cover (PRT)
Matt reflector (MRE)
Matt reflector + transparent cover (MRT)
Wiring
Electronic control gear FIX/DALI (ECG/EDA)
Emergency unit variant (3H, ECG)
Materials
Housing: sheet steel
Diffuser: microprismatic PMMA
Trim: sheet steel
Reflector: anodised aluminium
Cover: PMMA
Surface finish
Trim: white RAL 9003 (W03)
Service lifetime
100,000 hours/L90/B20 (ta 25°C)
Ambient temperature
From -20 °C to +35 °C
(from +5°C with EM unit)

DE

Montage
Einbauleuchte
Optisches System
Polierter Reflektor (PRE)
Polierter Reflektor + durchsichtige Abdeckung (PRT)
Matter Reflektor (MRE)
Matter Reflektor + durchsichtige Abdeckung (MRT)
Vorschaltgerät
Elektronisches Vorschaltgerät FIX/DALI (ECG/EDA)
Notbeleuchtung Variante (3H, ECG)
Material
Körper: Stahlblech
Diffusor: mikroprismatisches PMMA
Einfassung: Stahlblech
Reflektor: eloxiertes Aluminium
Abdeckung: PMMA
Oberflächenveredelung
Einfassung: weiss RAL 9003 (W03)
Lebensdauer
100,000 Stunden/L90/B20 (ta 25°C)
Umgebungstemperatur
Von -20 °C bis +35 °C
(von +5°C mit Notbeleuchtung)

FR

Montage
Plafonnier encastrable
Système optique
Réflecteur poli (PRE)
Réflecteur poli + couvercle transparente (PRT)
Réflecteur mat (MRE)
Réflecteur mat + couvercle transparente (MRT)
Équipement électrique
Ballast électronique FIX/DALI (ECG/EDA)
Variante de l'unité de secours (3H, ECG)
Matériels
Corps: tôle d'acier
Diffusor: PMMA microprismatique
Obruč: ocelový plech
Réflecteur: aluminium anodisé
Couvercle: PMMA
Finition de surface
Mou lure: blanc RAL 9003 (W03)
Durée de vie utile
100,000 heures/L90/B20 (ta 25°C)
Température ambiante
De -20 °C à +35 °C
(de +5°C avec l'unité de secours)

SK

Montáž
Vsažené
Optický systém
Leštený reflektor (PRE)
Leštený reflektor + transparentný kryt (PRT)
Matný reflektor (MRE)
Matný reflektor + transparentný kryt (MRT)
Elektrická výbava
Elektronický predradník FIX/DALI (ECG/EDA)
Varianta s núdzovou jednotkou (3H, ECG)
Material
Těleso: ocelový plech
Difuzor: mikroprismatický PMMA
Obruč: ocelový plech
Reflektor: anodizovaný hliník
Kryt: PMMA
Povrchová úprava
Obruč: biela RAL 9003 (W03)
Servisná životnosť
100,000 hodín/L90/B20 (ta 25°C)
Teplota okolia
Od -20 °C do +35 °C
(od +5°C s núdzovou jednotkou)

ES

Montaje
Empotradas en el techo
Sistema óptico
Reflector pulido (PRE)
Reflector pulido + cubierta transparente (PRT)
Reflector mate (MRE)
Reflector mate + cubierta transparente (MRT)
Cableado
Equipo de control electrónico FIX/DALI (ECG/EDA)
Variante unidad de emergencia (3H, ECG)
Material
Cuerpo: lámina de acero
Difusor: microprismático PMMA
Reborde: lámina de acero
Reflector: aluminio anodizado
Cubierta: PMMA
Tratamiento de la superficie
Reborde: blanco RAL 9003 (W03)
Vida útil
100,000 horas/L90/B20 (ta 25°C)
Temperatura ambiente
Desde -20 °C a +35 °C
(desde +5°C con unidad de emergencia)

IT

Installazione
Ad incasso a soffitto
Sistema ottico
Riflettore lucido (PRE)
Riflettore lucido + copertura trasparente (PRT)
Riflettore opaco (MRE)
Riflettore opaco + copertura trasparente (MRT)
Cablaggio
Ballast elettronico FIX/DALI (ECG/EDA)
Variante unità di emergenza (3H, ECG)
Materiali
Corpo: lamina d'acciaio
Diffusore: microprisma PMMA
Profilo: lamina d'acciaio
Riflettore: alluminio anodizzato
Copertura: PMMA
Finitura
Profilo: bianco RAL 9003 (W03)
Durata di vita
100,000 ore/L90/B20 (ta 25°C)
Temperatura d'ambiente
Da -20 °C a +35 °C
(da +5°C con unità di emergenza)

RU

Установка
Потолочная встроенная
Оптическая система
Шлифованный отражатель (PRE)
Шлифованный отражатель + чистая крышка (PRT)
Матовый отражатель (MRE)
Матовый отражатель + чистая крышка (MRT)
Электрическое оснащение
Электронный аппарат FIX/DALI (ECG/EDA)
Блок аварийного освещения (3H, ECG)
Material
Корпус: листовая сталь
Рассеиватель: микроприз. полиметилметакрилат
Накладка: листовая сталь
Отражатель: анодированный алюминий
Крышка: полиметилметакрилат
Отделка поверхности
Накладка: белый RAL 9003 (W03)
Срок службы
100,000 часов/L90/B20 (ta 25°C)
Температура окружающей среды
От -20 °C до +35 °C
(от +5°C с аварийного освещения)



THE MANUFACTURER CONTINUES TO DEVELOP PRODUCTS THROUGHOUT THEIR LIFETIME. THEREFORE, THE COMPANY RESERVES THE RIGHT TO MODIFY MATERIALS, COMPONENTS, AND TECHNICAL PARAMETERS WITHOUT NOTICE. LUMINOUS OUTPUT AND ELECTRICAL LOAD HAVE AN INITIAL TOLERANCE OF +/- 10% FROM NOMINAL. FAILURE OF ONE LED LIGHT POINT WITHIN A LUMINAIRE DOES NOT IMPAIR FUNCTIONAL PERFORMANCE AND SO IS NOT CLASSIFIED AS REASON FOR COMPLAINT.