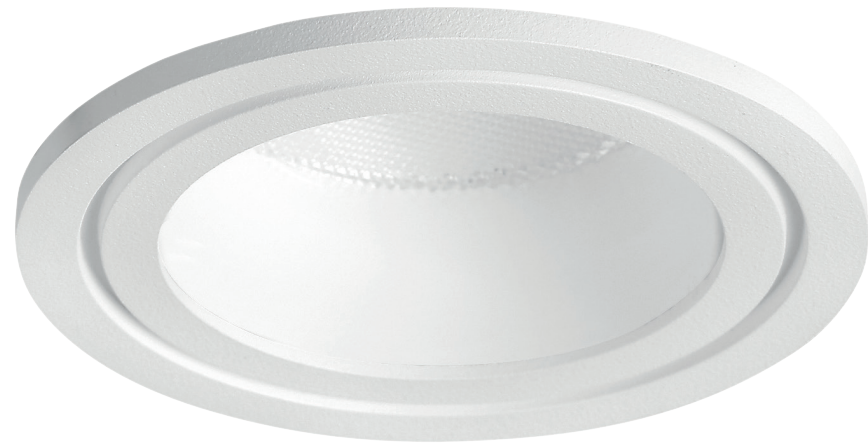
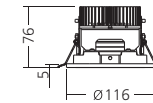
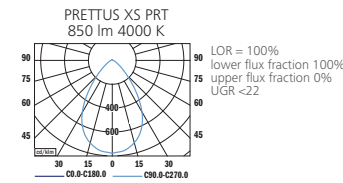


PRETTUS XS
POLISHED
LED



Prettus XS

PHOTOMETRY



MOUNTING



TYPE	NET LUMEN OUTPUT (AT TA = 25 °C) (lm)	POWER CONSUMPTION (W)	SYSTEM EFFICACY (lm/W)	COLOUR RENDERING INDEX CRI (Ra)	CORRELATED COLOUR TEMPERATURE CCT (K)	BEAM ANGLE	WEIGHT (kg)
PRETTUS XS PRE	800	8	100	80+	3000	60°	0.5
PRETTUS XS PRE	850	8	106	80+	4000	60°	0.5
PRETTUS XS PRE	1100	11	100	80+	3000	60°	0.5
PRETTUS XS PRE	1150	11	105	80+	4000	60°	0.5
PRETTUS XS PRT	750	8	94	80+	3000	60°	0.5
PRETTUS XS PRT	800	8	100	80+	4000	60°	0.5
PRETTUS XS PRT	1050	11	95	80+	3000	60°	0.5
PRETTUS XS PRT	1100	11	100	80+	4000	60°	0.5
PRETTUS XS PRO	450	8	56	80+	3000	84°	0.5
PRETTUS XS PRO	500	8	63	80+	4000	84°	0.5
PRETTUS XS PRO	650	11	59	80+	3000	84°	0.5
PRETTUS XS PRO	700	11	64	80+	4000	84°	0.5

Luminous flux tolerance +/- 10%



POLISHED REFLECTOR (PRE)



POLISHED REFLECTOR AND TRANSPARENT COVER (PRT)



POLISHED REFLECTOR AND OPAL COVER (PRO)



MATT REFLECTOR (MRE)



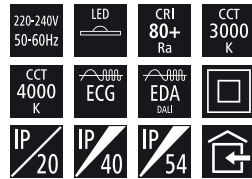
MATT REFLECTOR AND TRANSPARENT COVER (MRT)



WHITE ANODISED REFLECTOR (WRE)



WHITE ANODISED REFLECTOR AND TRANSPARENT COVER (WRT)



EN

Mounting
Ceiling recessed
Light source
LED
Optical system
Polished reflector (PRE)
Polished reflector + transparent cover (PRT)
Polished reflector + opal cover (PRO)
On request
Matt/White reflector
Wiring
Electronic control gear FIX/DALI (ECG/EDA)
Materials
Housing: sheet steel
Diffuser: microprismatic PMMA
Trim: die-cast aluminium
Reflector: polished anodised aluminium
Cover: transparent/opal PMMA
Surface finish
Trim: white RAL 9003 (W03)
Service lifetime
50,000 hours/L80/B10 (ta 25°C)
Ambient temperature
From -20 °C to +35 °C

DE

Montage
Einbauleuchte
Lichtquelle
LED
Optisches System
Polierter Reflektor (PRE)
Polierter Reflektor + durchsichtige Abdeckung (PRT)
Polierter Reflektor + opale Abdeckung (PRO)
Auf Anfrage
Matter/Weisser Reflektor
Vorschaltgerät
Elektronisches Vorschaltgerät FIX/DALI (ECG/EDA)
Material
Körper: Stahlblech
Diffusor: mikroprismatisches PMMA
Einfassung: Aluminiumdruckguss
Reflektor: poliertes eloxiertes Aluminium
Abdeckung: durchsichtiger/opaler PMMA
Oberflächenveredelung
Moulure: weiss RAL 9003 (W03)
Lebensdauer
50,000 Stunden/L80/B10 (ta 25°C)
Umgebungstemperatur
Von -20 °C bis +35 °C

FR

Montage
Plafonnier encastrable
Source lumineuse
LED
Système optique
Réflecteur poli (PRE)
Réflecteur poli + couvercle transparente (PRT)
Réflecteur poli + couvercle opale (PRO)
Sur demande
Réflecteur mat/blanc
Équipement électrique
Ballast électronique FIX/DALI (ECG/EDA)
Matériels
Corps: tôle d'acier
Diffuseur: PMMA microprismatique
Moulure: aluminium moulé sous pression
Réflecteur: aluminium anodisé poli
Couvercle: PMMA transparente/opale
Finition de surface
Moulure: blanc RAL 9003 (W03)
Durée de vie utile
50,000 heures/L80/B10 (ta 25°C)
Température ambiante
De -20 °C à +35 °C

SK

Montáž
Vsadený
Svetelný zdroj
LED
Optický systém
Leštený reflektor (PRE)
Leštený reflektor + transparentný kryt (PRT)
Leštený reflektor + opalový kryt (PRO)
Na požiadanie
Matný/Bielý reflektor
Elektrická výbava
Elektronický predradník FIX/DALI (ECG/EDA)
Material
Teleso: oceľový plech
Difúzor: mikroprizmatický PMMA
Obruč: hliníkový odliatok
Reflektor: leštený anodizovaný hliník
Kryt: transparentný/opalový PMMA
Povrchová úprava
Obruč: biela RAL 9003 (W03)
Servisná životnosť
50,000 hodín/L80/B10 (ta 25°C)
Teplota okolia
Od -20 °C do +35 °C

ES

Montaje
Empotradas en el techo
Fuente luminosa
LED
Sistema óptico
Reflector pulido (PRE)
Reflector pulido + cubierta transparente (PRT)
Reflector pulido + cubierta opala (PRO)
A petición
Reflector mate/blanco
Cableado
Equipo de control electrónico FIX/DALI (ECG/EDA)
Material
Cuerpo: lámina de acero
Difusor: microprismático PMMA
Reborde: aluminio presofundido
Reflector: aluminio anodizado pulido
Cubierta: PMMA transparente/opalo
Tratamiento de la superficie
Reborde: blanco RAL 9003 (W03)
Vida útil
50,000 horas/L80/B10 (ta 25°C)
Temperatura ambiente
Desde -20 °C a +35 °C

IT

Installazione
Ad incasso a soffitto
Sorgente luminosa
LED
Sistema ottico
Riflettore lucido (PRE)
Riflettore lucido + copertura trasparente (PRT)
Riflettore lucido + copertura opale (PRO)
Su richiesta
Riflettore opaco/bianco
Cablaggio
Ballast elettronico FIX/DALI (ECG/EDA)
Materiali
Corpo: lamina d'acciaio
Diffusore: microprisma PMMA
Profilo: pressofusione di alluminio
Riflettore: alluminio anodizzato lucido
Copertura: PMMA trasparente/opale
Finitura
Profilo: bianco RAL 9003 (W03)
Durata di vita
50,000 ore/L80/B10 (ta 25°C)
Temperatura d'ambiente
Da -20 °C a +35 °C

RU

Установка
Потолочная встроенная
Источник света
LED
Оптическая система
Шлифованный отражатель (PRE)
Шлифованный отражатель + чистая крышка (PRT)
Шлифованный отражатель + чистая крышка (PRO)
По запросу
Матовый/Белый отражатель
Электрическое оснащение
Электронный аппарат FIX/DALI (ECG/EDA)
Материал
Корпус: листовая сталь
Рассеиватель: микропризм. полиметилметакрилат
Накладка: литой алюминий
Отражатель: шлифованный анодированный алюминий
Крышка: чистая/матовая полиметилметакрилат
Отделка поверхности
Накладка: белый RAL 9003 (W03)
Срок службы
50,000 часов/L80/B10 (ta 25°C)
Температура окружающей среды
От -20 °C до +35 °C



THE MANUFACTURER CONTINUES TO DEVELOP PRODUCTS THROUGHOUT THEIR LIFETIME. THEREFORE, THE COMPANY RESERVES THE RIGHT TO MODIFY MATERIALS, COMPONENTS, AND TECHNICAL PARAMETERS WITHOUT NOTICE. LUMINOUS OUTPUT AND ELECTRICAL LOAD HAVE AN INITIAL TOLERANCE OF +/- 10 % FROM NOMINAL. FAILURE OF ONE LED LIGHT POINT WITHIN A LUMINAIRE DOES NOT IMPAIR FUNCTIONAL PERFORMANCE AND SO IS NOT CLASSIFIED AS REASON FOR COMPLAINT.

COMMERCIAL LED LUMINAIRES