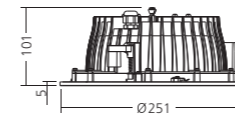
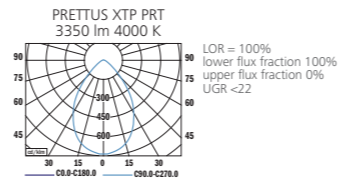


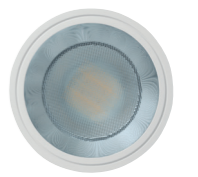
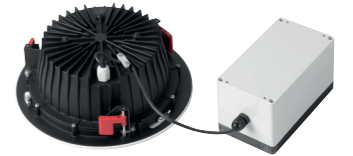
PRETTUS
POLISHED
LED



PHOTOMETRY



MOUNTING



POLISHED REFLECTOR AND TRANSPARENT COVER (PRT)

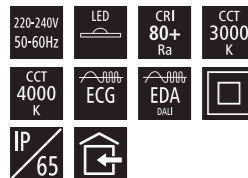
MATT REFLECTOR AND TRANSPARENT COVER (MRT)



Prettus XTP

TYPE	NET LUMEN OUTPUT (at Ta = 25 °C) (lm)	POWER CONSUMPTION (W)	SYSTEM EFFICACY (lm/W)	COLOUR RENDERING INDEX CRI (Ra)	CORRELATED COLOUR TEMPERATURE CCT (K)	BEAM ANGLE	WEIGHT (kg)	ORDER CODE			
								PRT	MRT	ECG	EDA
PRETTUS XTP PRT/MRT	2000	19	105	80+	3000	70°	2.0	103042	103043	103001	103007
PRETTUS XTP PRT/MRT	2100	19	111	80+	4000	70°	2.0	103047	103048	103002	103008
PRETTUS XTP PRT/MRT	2500	24	104	80+	3000	70°	2.0	103039	103040	103003	103009
PRETTUS XTP PRT/MRT	2600	24	108	80+	4000	70°	2.0	103037	103038	103004	103010
PRETTUS XTP PRT/MRT ECG / EDA	3200 / 3000	30 / 29	107 / 103	80+	3000	70°	2.0	103046	103044	103005	103011
PRETTUS XTP PRT/MRT ECG / EDA	3350 / 3100	30 / 29	112 / 107	80+	4000	70°	2.0	103041	103045	103006	103012

Luminous flux tolerance +/- 10%



EN

Mounting
Ceiling recessed
Optical system
Polished reflector + transparent cover (PRT)
Matt reflector + transparent cover (MRT)
On request
Polished reflector + opal cover (PRO)
Wiring
Electronic control gear FIX/DALI (ECG/EDA)
Materials
Housing: die-cast aluminium
Diffuser: microprismatic PMMA
Trim: die-cast aluminium
Reflector: anodised aluminium
Cover: glass
Surface finish
Trim: white RAL 9003 (W03)
Service lifetime
50,000 hours/L90/B10 (ta 25°C)
Ambient temperature
From -25 °C to +35 °C

DE

Montage
Einbauleuchte
Optisches System
Polierter Reflektor + durchsichtige Abdeckung (PRT)
Matter Reflektor + durchsichtige Abdeckung (MRT)
Auf Anfrage
Polierter Reflektor + opale Abdeckung (PRO)
Vorschaltgerät
Elektronisches Vorschaltgerät FIX/DALI (ECG/EDA)
Material
Körper: Aluminiumdruckguss
Diffusor: mikroprismatisches PMMA
Einfassung: Aluminiumdruckguss
Reflektor: eloxiertes Aluminium
Abdeckung: Glas
Oberflächenveredelung
Trim: weiss RAL 9003 (W03)
Lebensdauer
50,000 Stunden/L90/B10 (ta 25°C)
Umgebungstemperatur
Von -25 °C bis +35 °C

FR

Montage
Plafonnier encastrable
Système optique
Réflecteur poli + couvercle transparente (PRT)
Réflecteur mat + couvercle transparente (MRT)
Sur demande
Réflecteur poli + couvercle opale (PRO)
Équipement électrique
Ballast électronique FIX/DALI (ECG/EDA)
Matériels
Corps: aluminium moulé sous pression
Diffusor: PMMA microprismatique
Moulure: aluminium moulé sous pression
Réflecteur: aluminium anodisé
Couvercle: verre
Finition de surface
Moulure: blanc RAL 9003 (W03)
Durée de vie utile
50,000 heures/L90/B10 (ta 25°C)
Température ambiante
De -25 °C à +35 °C

SK

Montáž
Vsadené
Optický systém
Leštený reflektor + transparentný kryt (PRT)
Matný reflektor + transparentný kryt (MRT)
Na požiadanie
Leštený reflektor + opálový kryt (PRO)
Elektrická výbava
Elektronický predradník FIX/DALI (ECG/EDA)
Material
Těleso: hliníkový odliatok
Difúzor: mikroprismatický PMMA
Obruč: hliníkový odliatok
Reflektor: anodizovaný hliník
Kryt: sklo
Povrchová úprava
Obruč: biela RAL 9003 (W03)
Servisná životnosť
50,000 hodín/L90/B10 (ta 25°C)
Teplota okolia
Od -25 °C do +35 °C

ES

Montaje
Empotradas en el techo
Sistema óptico
Reflector pulido + cubierta transparente (PRT)
Reflector mate + cubierta transparente (MRT)
A petición
Reflector pulido + cubierta ópala (PRO)
Cableado
Equipo de control electrónico FIX/DALI (ECG/EDA)
Material
Cuerpo: aluminio presofundido
Difusor: microprismático PMMA
Reborde: aluminio presofundido
Reflector: aluminio anodizado
Cubierta: cristal
Tratamiento de la superficie
Reborde: blanco RAL 9003 (W03)
Vida útil
50,000 horas/L90/B10 (ta 25°C)
Temperatura ambiente
Desde -25 °C a +35 °C

IT

Installazione
Ad incasso a soffitto
Sistema ottico
Riflettore lucido + copertura trasparente (PRT)
Riflettore opaco + copertura trasparente (MRT)
Su richiesta
Riflettore lucido + copertura opale (PRO)
Cablaggio
Ballast elettronico FIX/DALI (ECG/EDA)
Materiali
Corpo: pressofusione di alluminio
Diffusore: microprisma PMMA
Profilo: pressofusione di alluminio
Riflettore: alluminio anodizzato
Copertura: vetro
Finitura
Profilo: bianco RAL 9003 (W03)
Durata di vita
50,000 ore/L90/B10 (ta 25°C)
Temperatura d'ambiente
Da -25 °C a +35 °C

RU

Установка
Потолочная встроенная
Оптическая система
Шлифованный отражатель + чистая крышка (PRT)
Матовый отражатель + чистая крышка (MRT)
По запросу
Шлифованный отражатель + чистая крышка (PRO)
Электрическое оснащение
Электронный аппарат FIX/DALI (ECG/EDA)
Материал
Корпус: литой алюминий
Рассеиватель: микроприз. полиметилметакрилат
Накладка: литой алюминий
Отражатель: анодированный алюминий
Крышка: стекло
Отделка поверхности
Накладка: белый RAL 9003 (W03)
Срок службы
50,000 часов/L90/B10 (та 25°C)
Температура окружающей среды
От -25 °C до +35 °C



THE MANUFACTURER CONTINUES TO DEVELOP PRODUCTS THROUGHOUT THEIR LIFETIME. THEREFORE, THE COMPANY RESERVES THE RIGHT TO MODIFY MATERIALS, COMPONENTS, AND TECHNICAL PARAMETERS WITHOUT NOTICE. LUMINOUS OUTPUT AND ELECTRICAL LOAD HAVE AN INITIAL TOLERANCE OF +/- 10 % FROM NOMINAL. FAILURE OF ONE LED LIGHT POINT WITHIN A LUMINAIRE DOES NOT IMPAIR FUNCTIONAL PERFORMANCE AND SO IS NOT CLASSIFIED AS REASON FOR COMPLAINT.

COMMERCIAL LED LUMINAIRES