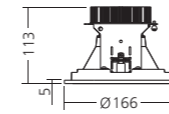
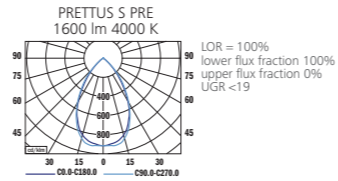


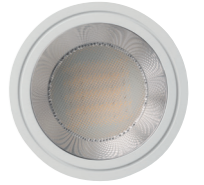
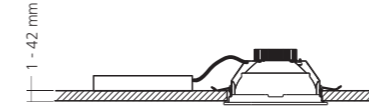
**PRETTUS**  
POLISHED  
LED



**PHOTOMETRY**



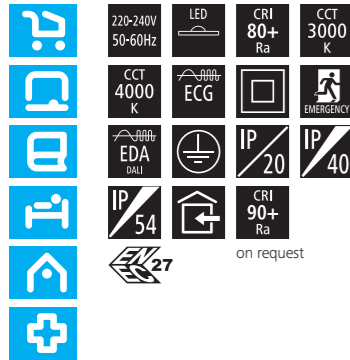
**MOUNTING**



TYPE	NET LUMEN OUTPUT (at Ta = 25 °C) (lm)	POWER CONSUMPTION (W)	SYSTEM EFFICACY (lm/W)	COLOUR RENDERING INDEX CRI (Ra)	CORRELATED COLOUR TEMPERATURE CCT (K)	BEAM ANGLE (C0-180, C90-270)	EMERGENCY UNIT 3H (lm)	WEIGHT (kg)	ORDER CODE					
									REFLECTOR			REFLECTOR + COVER		
									ECG	EDA	EM	ECG	EDA	EM
PRETTUS II S PRE/PRT	1650	15	110	80+	3000	65°	300	0.8	122001	122003	122009	122025	122027	122033
PRETTUS II S PRE/PRT	1750	15	117	80+	4000	65°	300	0.8	122002	122004	122010	122026	122028	122034
PRETTUS II S PRE/PRT	2150	19	113	80+	3000	65°	300	0.8	122005	122007	122011	122029	122031	122035
PRETTUS II S PRE/PRT	2250	19	118	80+	4000	65°	300	0.8	122006	122008	122012	122030	122032	122036
PRETTUS II S MRE/MRT	1650	15	110	80+	3000	65°	300	0.8	122013	122015	122021	122037	122039	122045
PRETTUS II S MRE/MRT	1750	15	117	80+	4000	65°	300	0.8	122014	122016	122022	122038	122040	122046
PRETTUS II S MRE/MRT	2150	19	113	80+	3000	65°	300	0.8	122017	122019	122023	122041	122043	122047
PRETTUS II S MRE/MRT	2250	19	118	80+	4000	65°	300	0.8	122018	122020	122024	122042	122044	122048

Luminous flux tolerance +/- 10%.

# Prettus II S



**EN**

**Mounting**  
Ceiling recessed  
**Optical system**  
Polished reflector (PRE)  
Polished reflector + transparent cover (PRT)  
Matt reflector (MRE)  
Matt reflector + transparent cover (MRT)  
**Wiring**  
Electronic control gear FIX/DALI (ECG/EDA)  
Emergency unit variant (3H, ECG)  
**Materials**  
Housing: sheet steel  
Diffuser: microprismatic PMMA  
Trim: die-cast aluminium  
Reflector: eloxiated aluminium  
Cover: PMMA  
**Surface finish**  
Trim: white RAL 9003 (W03)  
**Service lifetime**  
100,000 hours/L90/B20 (ta 25°C)  
**Ambient temperature**  
From -20 °C to +35 °C  
(from +5°C with EM unit)

**DE**

**Montage**  
Einbauleuchte  
**Optisches System**  
Polierter Reflektor (PRE)  
Polierter Reflektor + durchsichtige Abdeckung (PRT)  
Matter Reflektor (MRE)  
Matter Reflektor + durchsichtige Abdeckung (MRT)  
**Vorschaltgerät**  
Elektronisches Vorschaltgerät FIX/DALI (ECG/EDA)  
Notbeleuchtung Variante (3H, ECG)  
**Material**  
Körper: Stahlblech  
Diffusor: mikropriзмatisches PMMA  
Einfassung: Aluminiumdruckguss  
Reflektor: eloxiertes Aluminium  
Abdeckung: PMMA  
**Oberflächenveredelung**  
Einfassung: weiss RAL 9003 (W03)  
**Lebensdauer**  
100,000 Stunden/L90/B20 (ta 25°C)  
**Umgebungstemperatur**  
Von -20 °C bis +35 °C  
(von +5°C mit Notbeleuchtung)

**FR**

**Montage**  
Plafonnier encastrable  
**Système optique**  
Réflecteur poli (PRE)  
Réflecteur poli + couvercle transparente (PRT)  
Réflecteur mat (MRE)  
Matry réflecteur + couvercle transparente (MRT)  
**Équipement électrique**  
Ballast électronique FIX/DALI (ECG/EDA)  
Variante s nůdzovou jednotkou (3H, ECG)  
**Matériels**  
Corps: tôle d'acier  
Diffuseur: PMMA microprismatique  
Moulure: aluminium moulé sous pression  
Réflecteur: aluminium anodisé  
Couvercle: PMMA  
**Finition de surface**  
Obruč: blanc RAL 9003 (W03)  
**Durée de vie utile**  
100,000 heures/L90/B20 (ta 25°C)  
**Température ambiante**  
De -20 °C à +35 °C  
(de +5°C avec l'unité de secours)

**SK**

**Montáž**  
Vsadené  
**Optický systém**  
Leštený reflektor (PRE)  
Leštený reflektor + transparentný kryt (PRT)  
Matný reflektor (MRE)  
Matný reflektor + transparentný kryt (MRT)  
**Elektrická výbava**  
Elektronický predradník FIX/DALI (ECG/EDA)  
Varianta s nůdzovou jednotkou (3H, ECG)  
**Material**  
Těleso: oceľový plech  
Difúzor: mikropriзмatický PMMA  
Obruč: hliníkový odlatok  
Reflektor: anodizovaný hliník  
Kryt: PMMA  
**Povrchová úprava**  
Obruč: biela RAL 9003 (W03)  
**Servisná životnosť**  
100,000 hodín/L90/B20 (ta 25°C)  
**Teplota okolia**  
Od -20 °C do +35 °C  
(od +5°C s nůdzovou jednotkou)

**ES**

**Montaje**  
Empotradas en el techo  
**Sistema óptico**  
Reflector pulido (PRE)  
Reflector pulido + cubierta transparente (PRT)  
Reflector mate (MRE)  
Reflector mate + cubierta transparente (MRT)  
**Cableado**  
Equipo de control electrónico FIX/DALI (ECG/EDA)  
Variante unidad de emergencia (3H, ECG)  
**Material**  
Cuerpo: lámina de acero  
Difusor: microprismático PMMA  
Reborde: aluminio presofundido  
Reflector: aluminio anodizado  
Cubierta: PMMA  
**Tratamiento de la superficie**  
Reborde: blanco RAL 9003 (W03)  
**Vida útil**  
100,000 horas/L90/B20 (ta 25°C)  
**Temperatura ambiente**  
Desde -20 °C a +35 °C  
(desde +5°C con unidad de emergencia)

**IT**

**Installazione**  
Ad incasso a soffitto  
**Sistema ottico**  
Riflettore lucido (PRE)  
Riflettore lucido + copertura trasparente (PRT)  
Riflettore opaco (MRE)  
Riflettore opaco + copertura trasparente (MRT)  
**Cablaggio**  
Ballast elettronico FIX/DALI (ECG/EDA)  
Variante unità di emergenza (3H, ECG)  
**Materiali**  
Corpo: lamina d'acciaio  
Diffusore: microprisma PMMA  
Profilo: pressofusione di alluminio  
Riflettore: alluminio anodizzato  
Copertura: PMMA  
**Finitura**  
Profilo: bianco RAL 9003 (W03)  
**Durata di vita**  
100,000 ore/L90/B20 (ta 25°C)  
**Temperatura d'ambiente**  
Da -20 °C a +35 °C  
(da +5°C con unità di emergenza)

**RU**

**Установка**  
Потолочная встроенная  
**Оптическая система**  
Шлифованный отражатель (PRE)  
Шлифованный отражатель + чистая крышка (PRT)  
Матовый отражатель (MRE)  
Матовый отражатель + чистая крышка (MRT)  
**Электрическое оснащение**  
Электронный аппарат FIX/DALI (ECG/EDA)  
Блок аварийного освещения (3H, ECG)  
**Материал**  
Корпус: листовая сталь  
Рассеиватель: микропризм. полиметилметакрилат  
Накладка: литой алюминий  
Отражатель: анодированный алюминий  
Крышка: полиметилметакрилат  
**Отделка поверхности**  
Накладка: белый RAL 9003 (W03)  
**Срок службы**  
100,000 часов/L90/B20 (ta 25°C)  
**Температура окружающей среды**  
От -20 °C до +35 °C  
(от +5°C с аварийного освещения)



THE MANUFACTURER CONTINUES TO DEVELOP PRODUCTS THROUGHOUT THEIR LIFETIME. THEREFORE, THE COMPANY RESERVES THE RIGHT TO MODIFY MATERIALS, COMPONENTS, AND TECHNICAL PARAMETERS WITHOUT NOTICE. LUMINOUS OUTPUT AND ELECTRICAL LOAD HAVE AN INITIAL TOLERANCE OF +/- 10 % FROM NOMINAL. FAILURE OF ONE LED LIGHT POINT WITHIN A LUMINAIRE DOES NOT IMPAIR FUNCTIONAL PERFORMANCE AND SO IS NOT CLASSIFIED AS REASON FOR COMPLAINT.